

FINAL PLAT for STILLWOOD TOWNHOUSES

A RESUBDIVISION OF LOTS 15 - 18, BLOCK 63, TOWNSITE OF FLAGSTAFF, BOOK 1 OF MAPS, PAGES 16 & 16A, RECORDS OF COCONINO COUNTY, ARIZONA, LOCATED IN THE SW 1/4 OF SECTION 15, T 21 N, R 7 E, G & SRM COCONINO COUNTY, FLAGSTAFF, ARIZONA, CONTAINING 0.326 ACRES, MORE OR LESS

OWNER:
J. THOMAS STILLEY
 17-1/2 N. LEROUX STREET
 FLAGSTAFF, ARIZONA 86001
 PHONE. (520) 774-2684

UTILITY COMPANY APPROVALS

J. S. Creason 2/16/69
 PUBLIC SERVICE COMPANY
Carol Wilson 2/16/69
 CITY OF FLAGSTAFF
[Signature] 2/16/69
 CITY ENGINEER

CITY OF FLAGSTAFF APPROVAL

IT IS HEREBY CERTIFIED THAT THIS PLAT HAS BEEN OFFICIALLY APPROVED FOR RECORD BY THE CITY ENGINEER OF FLAGSTAFF, ARIZONA ON THE 21st DAY OF FEBRUARY, 1969.

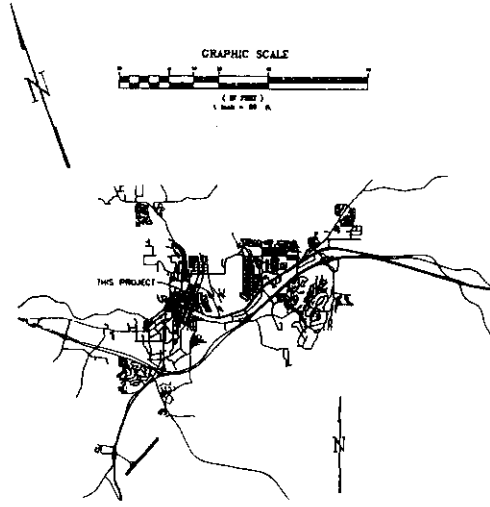
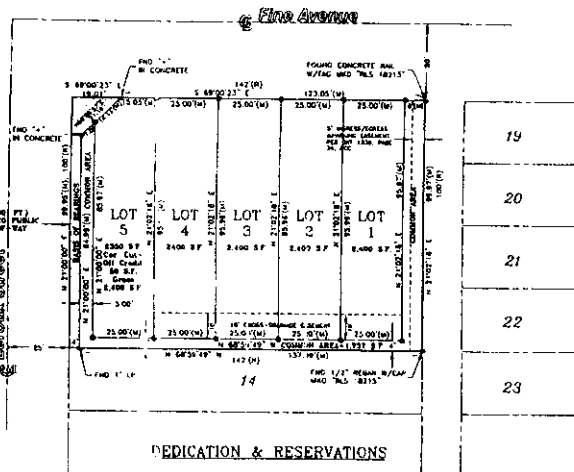
By: *[Signature]*
 CITY ENGINEER

It is hereby certified that this plat has been officially approved for presentation to the City Engineer, City of Flagstaff, Arizona, on the 21st day of FEBRUARY, 1969.

By: *[Signature]*
 CITY ENGINEER

It is hereby certified that this plat has been officially approved for presentation to the City Engineer, City of Flagstaff, Arizona, on the 21st day of FEBRUARY, 1969.

By: *[Signature]*
 CITY ENGINEER



DEDICATION & RESERVATIONS

KNOW ALL MEN BY THESE PRESENTS THAT J. THOMAS STILLEY HAS SUBDIVIDED THAT PORTION OF THE SOUTHWEST QUARTER OF SECTION 15, TOWNSHIP 21 NORTH, RANGE 7 EAST, G & SRM RIVER MERIDIAN, COCONINO COUNTY, FLAGSTAFF, ARIZONA, UNDER THE NAME "STILLWOOD TOWNHOUSES" AS PLATTED HEREON. THIS PLAT IS MADE AND RECORDED IN ACCORDANCE WITH THE OCCUPANCY, CONDITIONS AND RESTRICTIONS FOR "STILLWOOD TOWNHOUSES" RECORDED IN THE RECORDS OF COCONINO COUNTY, ARIZONA.

J. THOMAS STILLEY HEREBY PUBLISHES THIS PLAT, CONSISTING OF ONE SHEET, AS AND FOR THE PLAT OF "STILLWOOD TOWNHOUSES" HEREBY DECLARES THAT THIS PLAT SETS FORTH THE LOCATION AND DIMENSIONS OF ALL LOTS AND EASEMENTS, AND THAT EACH LOT SHALL BE BOUND BY THE NUMBER GIVEN EACH ON THIS PLAT, AND HEREBY DEDICATES THE COMMON AREA TO THE STILLWOOD TOWNHOUSES ASSOCIATION AND THE RIGHT-OF-WAY TO THE PUBLIC.

IN WITNESS WHEREOF, J. THOMAS STILLEY HAS CAUSED HIS NAME TO BE SIGNED AND AFFIXED HEREON AS OF FEBRUARY 1969.

By: *[Signature]*
 J. THOMAS STILLEY

STATE OF ARIZONA
 COUNTY OF COCONINO

THE FOREGOING INSTRUMENT WAS ACKNOWLEDGED BEFORE ME THIS 21st DAY OF FEBRUARY, 1969, BY J. THOMAS STILLEY.

MY COMMISSION EXPIRES 1/1/71

[Signature]
 NOTARY PUBLIC

LEGEND

- 1. FOUND MONUMENT AS NOTED
- 2. SET 1/2" REBAR W/ CAP AND "MS 18215"
- 3. CALCULATED POINT, NOTHING FOUND OR SET IN ACQUIRED DATA
- 4. RECORD DATA, BOOK 1 OF MAPS, PAGE 16, MCC
- 5. RECORDS OF COCONINO COUNTY, ARIZONA

OCCUPANCY

NO CERTIFICATE OF OCCUPANCY FOR ANY STRUCTURE OR BUILDING MAY BE ISSUED FOR ANY STRUCTURE OR BUILDING IN THIS TRACT BE OCCUPIED UNTIL THE REQUIRED WATER, SEWER AND OTHER UTILITY UTILITIES ARE INSTALLED AND APPROVED OR ACCEPTED BY THE CITY ENGINEER.

By: *[Signature]*
 ROYAL W. WERNHAN, AS PE #1500
 CIVIL ENGINEER

SURVEYOR'S CERTIFICATION

THIS IS TO CERTIFY THAT

1. THIS PLAT WAS PREPARED FROM FIELD NOTES KEPT BY ME.
2. THIS IS THE ONLY ORIGINAL AND TRUE COPY OF THIS PLAT.
3. I HEREBY CERTIFY THAT THIS PLAT IS A COMPLETE AND ACCURATE REPRESENTATION OF THE FIELD NOTES.
4. I HEREBY CERTIFY THAT I HAVE NOT ACCEPTED THE PRESENTING SYSTEM.

CIVIL ENGINEER, RONALD W. WERNHAN, AS PE #1500

WERHAN, FOLKERS & MONTAN, INC.
 ENGINEERS & SURVEYORS
 405 S. WILSON ST., SUITE 7
 FLAGSTAFF, AZ 86001
 (520) 779-4505
 FAX (520) 779-7456

DATE	BY	REVISION
12/13/65	W.F.M.	PRELIMINARY

STILLWOOD TOWNHOUSES

