

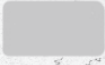
Elevation "A"

A - has line pop - out on side of garage/windows, the least detail & roof tile facing street and square windows.

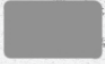
1



2

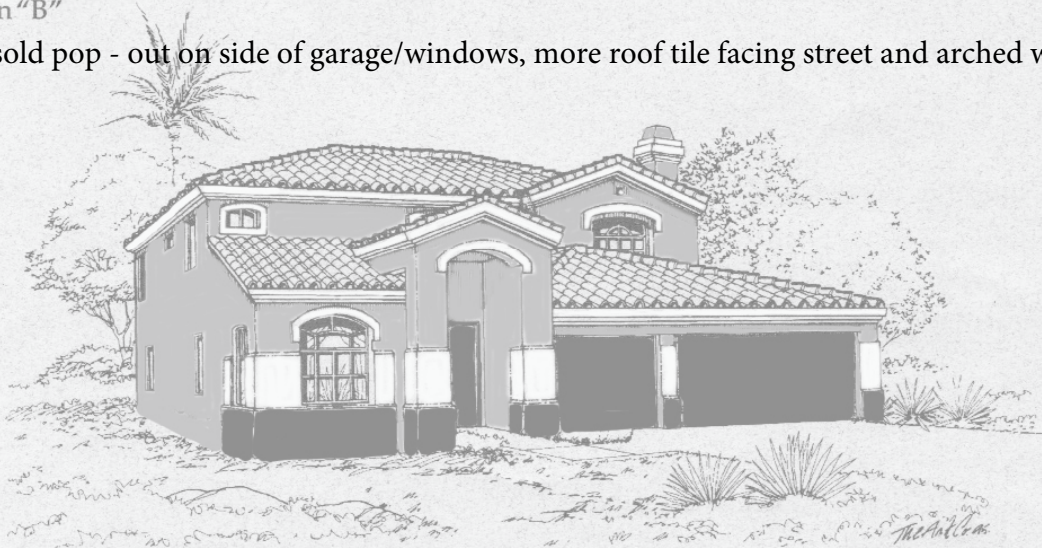


3



Elevation "B"

B - has sold pop - out on side of garage/windows, more roof tile facing street and arched windows like an eye.



Elevation "C"

C - has double pop - outs on side of garage/windows, the most roof tile facing the street and barrel windows.

