

Crimson Mountain Homeowners Association House Painting Guidelines Adopted September 21, 2005/ Revised March 18, 2026

Crimson Mountain is a master planned community, not merely a collection of subdivisions; therefore an organization has been created to oversee the ongoing development of the community. To this end, every property owner at Crimson Ridge, Mountain Ranch Estates & Villa's and Silverado at Crimson Ridge is a Member of the Crimson Mountain Homeowners Association (the "Association"), which is responsible for the maintenance and management of all common areas and related facilities, and administration of construction activities by Members in accordance with adopted Design Guidelines.



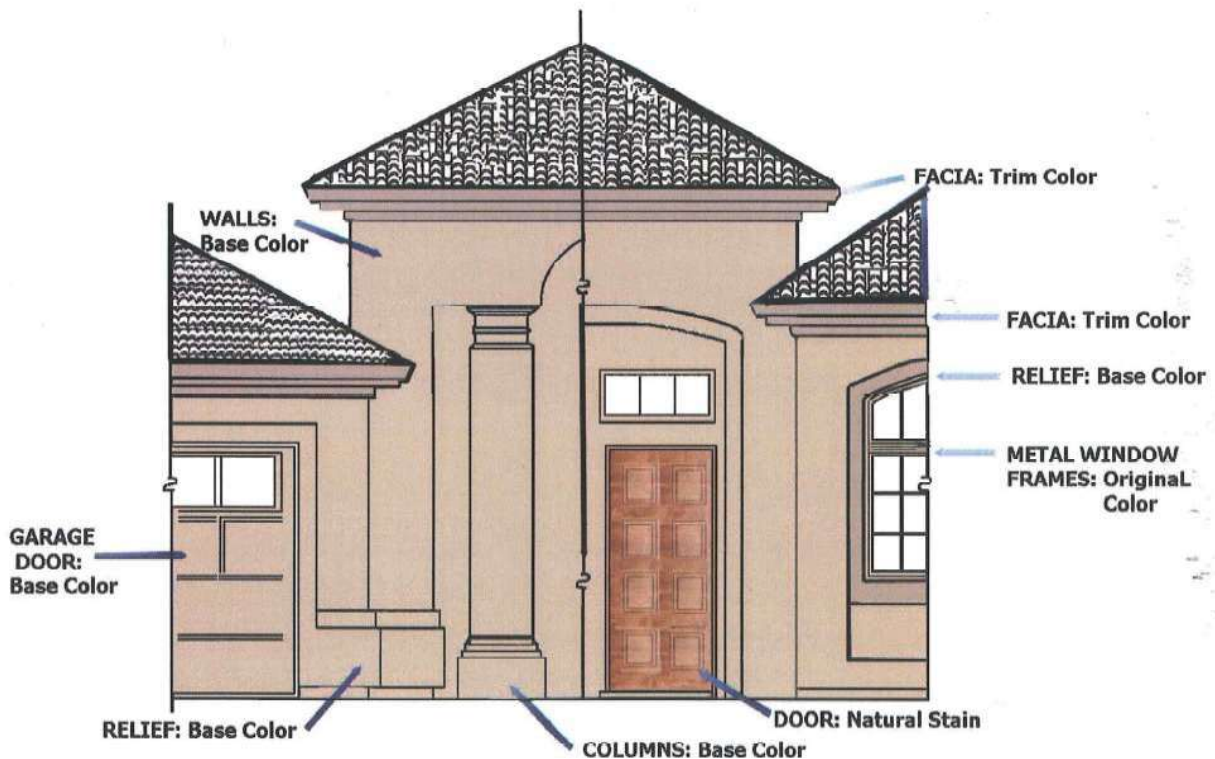
Crimson Mountain Homeowners Association

Design Compatibility

Proposed paint color or scheme must be compatible with the design characteristics of the property itself, adjoining properties, and the neighborhood setting.

Design Submission Requirements

It is the Member's responsibility to submit for written approval. If the contractor is submitting plans, the Landscape / Architectural Submission Form must be filled out completely so the CMAC has the option of contacting the Member about possible conflicts or for more information. A copy of the plans will be returned to the Member, with the original plans kept on file at the management company.



Please note pop out may now be painted the as trim selection

NOTES FROM THE ARC

In the **Silverado** area there are some unique colors that apply to **this area only** (Sedona Peach #386 and Cool Forest #8095D.) Cool Forest is a green color and both were used for trim only. The committee decided that if a house has this original color and wanted to repaint with the original colors, then this would be allowed. However, if the original colors were changed in any way, then these two colors could not be utilized any longer.

In an effort to allow more options to homeowners, the committee has decided that any of the following colors can be considered in all areas within the association. This also will eliminate the "unique" colors as indicated above in the Silverado neighborhood when homes are repainted.

- White Sand #5950
- Almond #5731
- Scroll #5230
- Pearl #DE7
- Toasted Tan #7783M
- Sawyer's Fence #8231W
- Plaza Buff #8251W
- Ivory Sampler #8250W
- Daplin #8234M
- Indian Party #8283W
- Strata Light #8252W
- Plaza Buff #8251W
- Ivory Sampler #8250W
- Daplin #8234M
- Indian Party #8283W
- Strata Light 8252W

The above colors are current colors on homes in the association. In order to provide more options, colors can be combined with the body of the house in one color with the trim in another. The accents or "popouts" around windows etc can be painted the same color as the trim. Homes with "Columns" **MUST** paint the columns the **SAME** color as the **BODY** of the house.

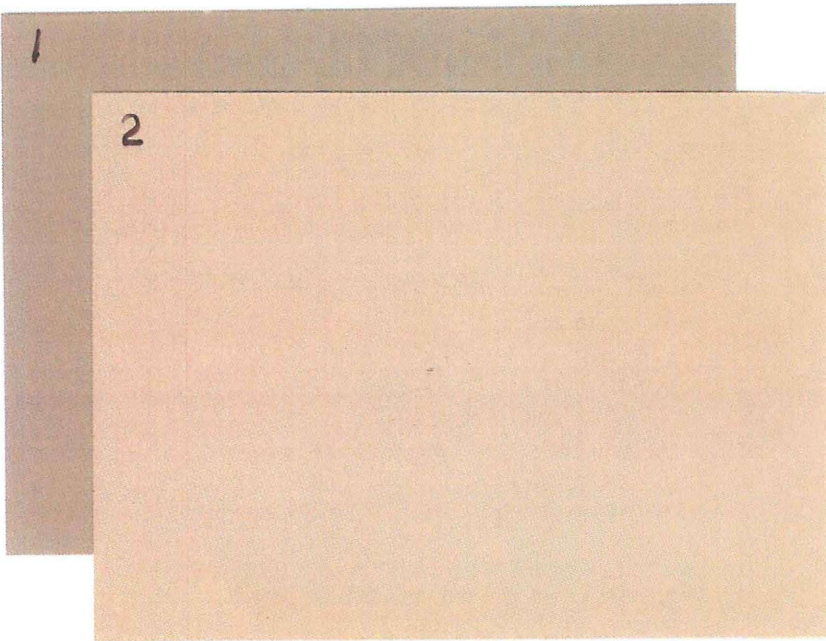
The committee also selected some other colors so that homeowners can have more options and colors available. These colors can be "flipped" between body and/or trim color at the owners discretion for submission to the committee for approval. We have matched the two (or three) colors that we agree can go together. If there are three colors identified in the scheme, the homeowner can pick whichever two colors out of the three they like. We feel this allows the maximum flexibility while maintaining control over the colors to ensure value and compatibility for the neighborhoods. Once again, all color names are from Frazee and Fred is going to get a sample sheet with these schemes for visual comparison.

- Rodeo Jake/Wild Rone
- Rincon Cove/ Crockful
- *Caballero Clay/Wild Rone/Navajo Step
- Apache Tan/Baked Potato
- *Jakarta/Tumble Weed/Rincon Cove
- Rodeo Jake/Truffle/Caballero Clay
- Jakarta/Apache Tan
- *High Noon/Desert Hue/Desert Grey

*Pick two colors from the three identified.

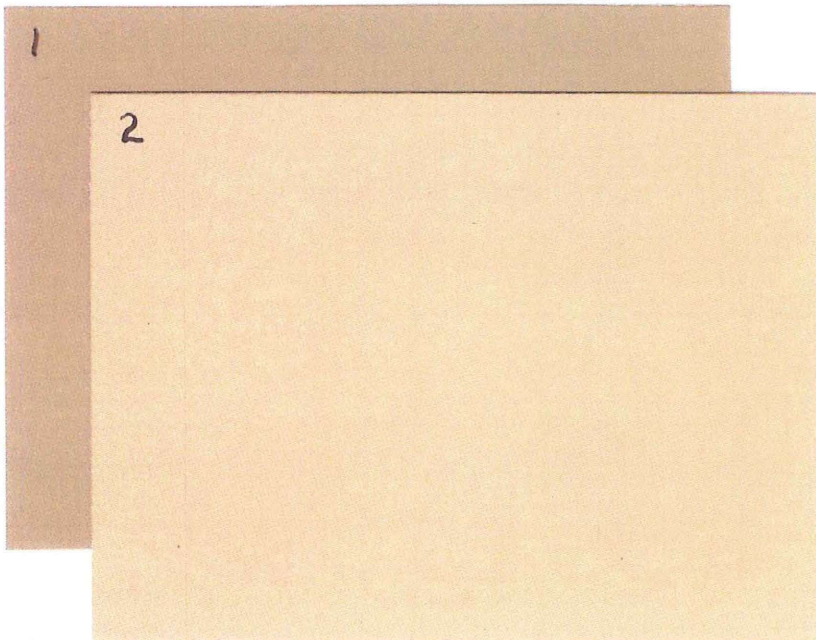


THE #1 CHOICE OF
PAINTING PROFESSIONALS®



Scheme 1

1. DE6215 Wooden Peg
2. DEC757 Rincon Cove

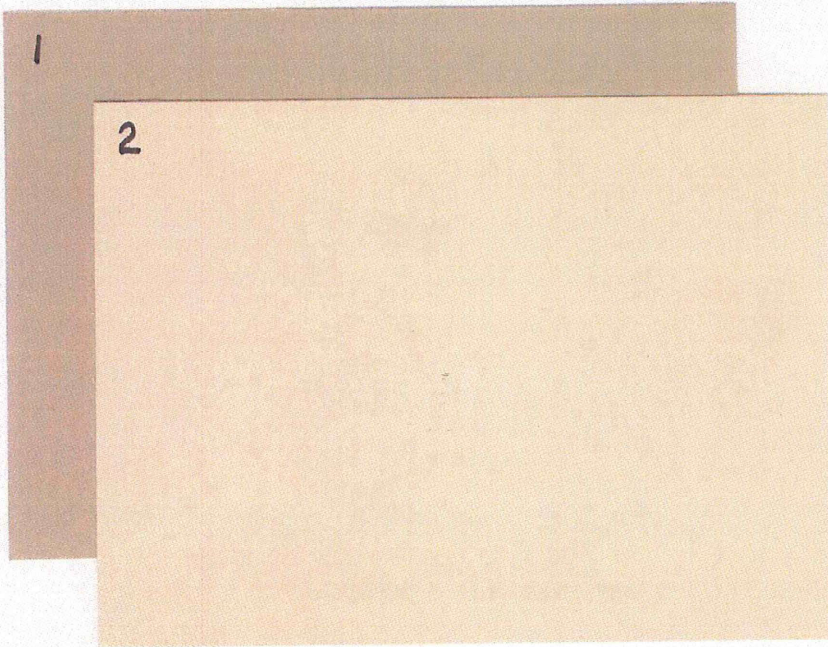


Scheme 2

1. DEC717 Baked Potato
2. DEC746 Apache Tan

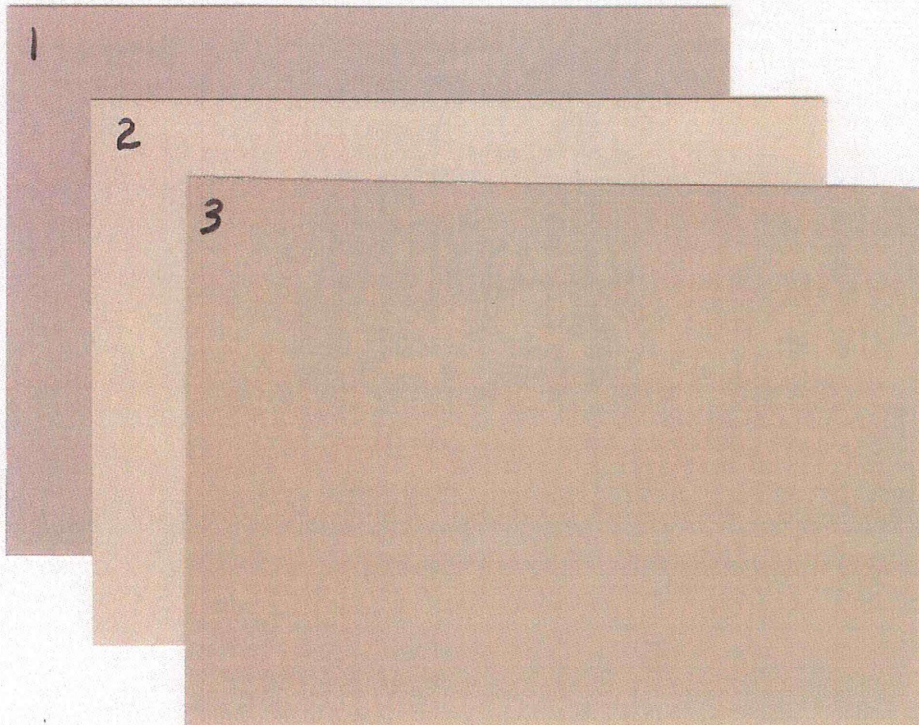


THE #1 CHOICE OF
PAINTING PROFESSIONALS®



Scheme 3

1. DE6123 Trail Dust
2. DE6128 Sand Dune

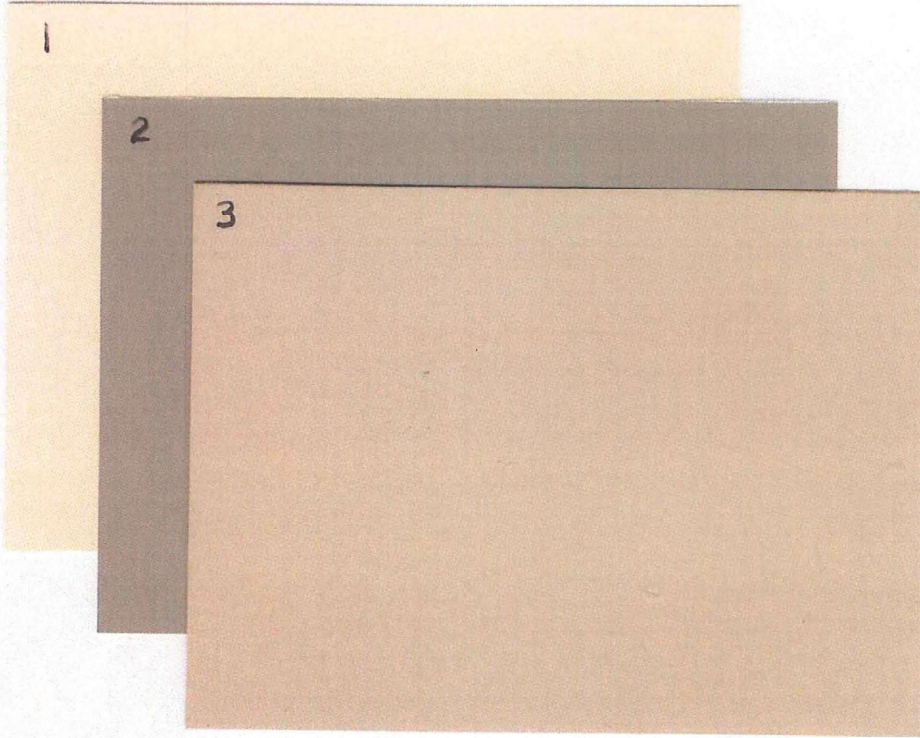


Scheme 4

1. DE6074 Frontier Land
2. DEC752 Birchwood
3. DE6123 Trail Dust

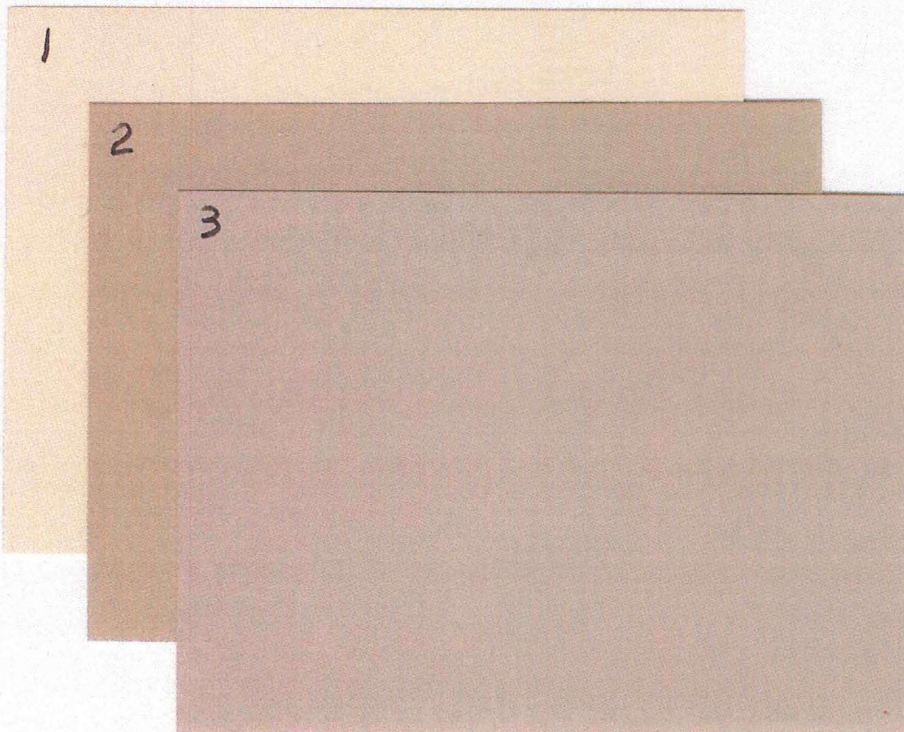


THE #1 CHOICE OF
PAINTING PROFESSIONALS.®



Scheme 5

1. DEC737 Jakarta
2. DEC750 Bison Beige
3. DEC757 Rincon Cove

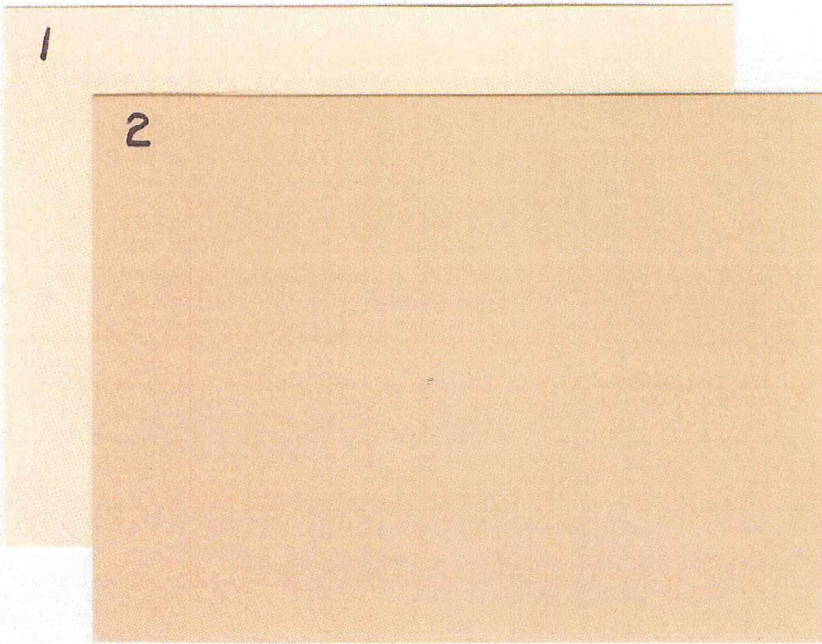


Scheme 6

1. DE6128 Sand Dune
2. DEC759 Hickory
3. DE6074 Frontier Land

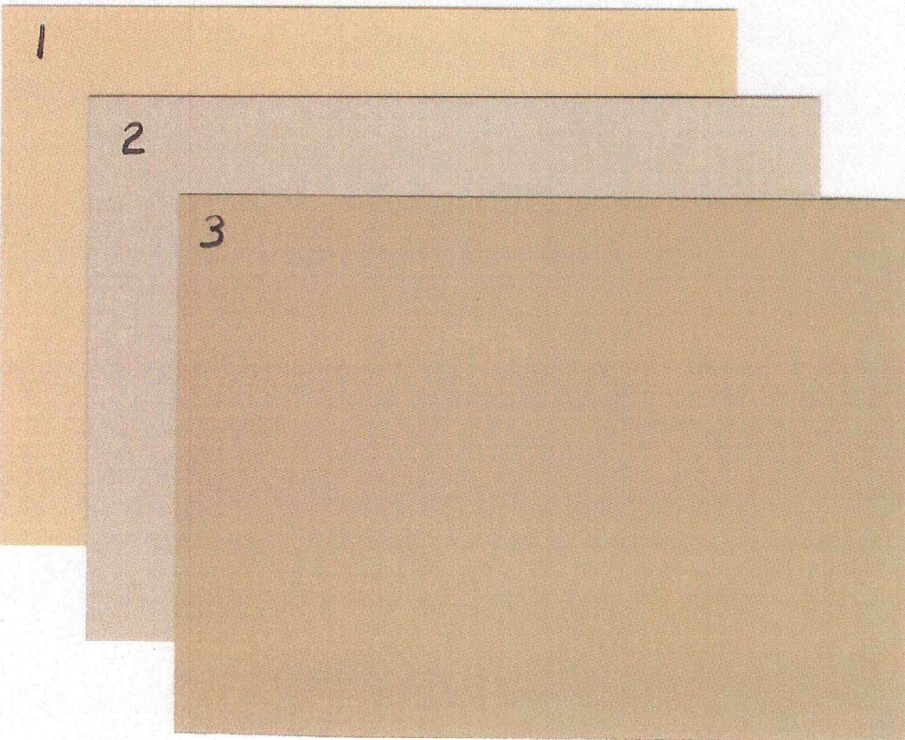


THE #1 CHOICE OF
PAINTING PROFESSIONALS®



Scheme 7

1. DEC737 Jakarta
2. DEC746 Apache Tan



Scheme 8

1. DEC743 High Noon
2. DEC6214 Pigeon Gray
3. DEC760 Desert Gray

This scheme of paint colors: (Added 03/18/26)

DEC750 Bison Beige Body RL#RL#649	DEC752 Birchwood Fascia/Pop-outs RL#RL#659
	DE6062 Tea Bag Iron/Shutters RL#RL#548