

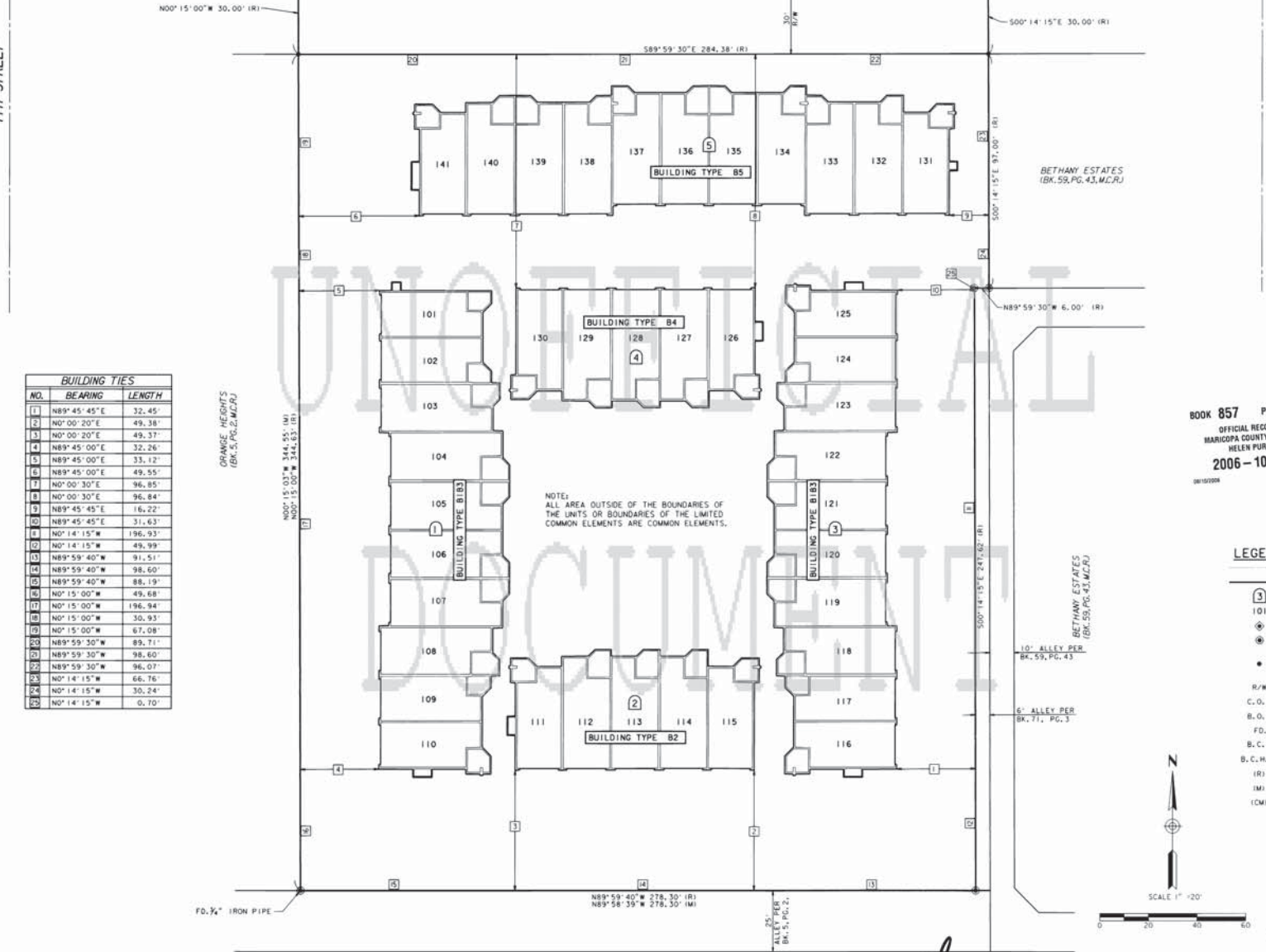
FD, C.O.P., B.C.F. OF THE NORTHWEST QUARTER OF THE SOUTHWEST QUARTER OF SECTION 2, TOWNSHIP 2 N, RANGE 3 E.

FD, C.O.P., B.C.F. OF THE NORTHWEST QUARTER OF THE SOUTHWEST QUARTER OF SECTION 2 N, RANGE 3 E.

7TH STREET

10TH STREET

ROSE LANE



BUILDING TIES		
NO.	BEARING	LENGTH
1	N89°45'45"E	32.45'
2	N0°00'20"E	49.38'
3	N0°00'20"E	49.37'
4	N89°45'00"E	32.26'
5	N89°45'00"E	33.12'
6	N89°45'00"E	49.55'
7	N0°00'30"E	96.85'
8	N0°00'30"E	96.84'
9	N89°45'45"E	16.22'
10	N89°45'45"E	31.63'
11	N0°14'15"W	196.93'
12	N0°14'15"W	49.99'
13	N89°59'40"W	91.51'
14	N89°59'40"W	98.60'
15	N89°59'40"W	88.19'
16	N0°15'00"W	49.68'
17	N0°15'00"W	196.94'
18	N0°15'00"W	30.93'
19	N0°15'00"W	67.08'
20	N89°59'30"W	89.71'
21	N89°59'30"W	98.60'
22	N89°59'30"W	96.07'
23	N0°14'15"W	66.76'
24	N0°14'15"W	30.24'
25	N0°14'15"W	0.70'

GRANGE HEIGHTS  
(BK. 5, PG. 2, M.C.R.)

UNDOCUMENTED

NOTE:  
ALL AREA OUTSIDE OF THE BOUNDARIES OF THE UNITS OR BOUNDARIES OF THE LIMITED COMMON ELEMENTS ARE COMMON ELEMENTS.

BOOK 857 PAGE 31  
OFFICIAL RECORDS OF MARICOPA COUNTY RECORDER HELEN PURCELL  
2006-1069823  
02/24/08

- LEGEND**
- INDICATES ROADWAY CENTERLINE
  - INDICATES BOUNDARY / PROPERTY LINE
  - 101 INDICATES BUILDING NUMBER
  - 101 INDICATES UNIT NUMBER
  - INDICATES SECTION OR 1/4 SECTION CORNER
  - INDICATES SUBDIVISION CORNER, SET 1/2" CAPPED REBAR P.L.S. NO. 26409, UNLESS OTHERWISE NOTED
  - INDICATES PROPERTY CORNER, 1/2" REBAR TO BE SET, R.L.S. NO. 26409, UNLESS OTHERWISE NOTED
  - R/W INDICATES RIGHT OF WAY
  - C.O.P. INDICATES CITY OF PHOENIX
  - B.O.B. INDICATES BASIS OF BEARING
  - FD. INDICATES FOUND
  - B.C.F. INDICATES BRASS CAP FLUSH
  - B.C.H.H. INDICATES BRASS CAP IN HANDHOLE
  - (R) INDICATES RECORD
  - (M) INDICATES MEASURED
  - (CM) INDICATES CALCULATED FROM MEASURED



CONDOMINIUM PLAT OF ANDARE

BETHANY ESTATES  
(BK. 59, PG. 43, M.C.R.)



**FIRST FLOOR LEVEL SITE PLAN**

SHEET 3 OF 10

<b>RICK ENGINEERING COMPANY</b>		1130 NORTH 16TH STREET PHOENIX, AZ 85016 602.957.3300 FAX:602.285.2396		rickengineering.com	
Plan	Issue	Rev	Chg	Rev	Chg
DATE: 08-AUG-2006		PROJECT NO. 3438		DRAWN BY: FW, MLM	

PRELIMINARY-NOT FOR CONSTRUCTION OR RECORDING