

FD. C.O.P. B.C.F. OF THE
SOUTHWEST QUARTER OF THE
SECTION 2, TOWNSHIP 2 N.,
RANGE 3 E.

FD. C.O.P. B.C.F. OF THE
SOUTHWEST QUARTER OF THE
SECTION 2, TOWNSHIP 2 N.,
RANGE 3 E.

7TH STREET

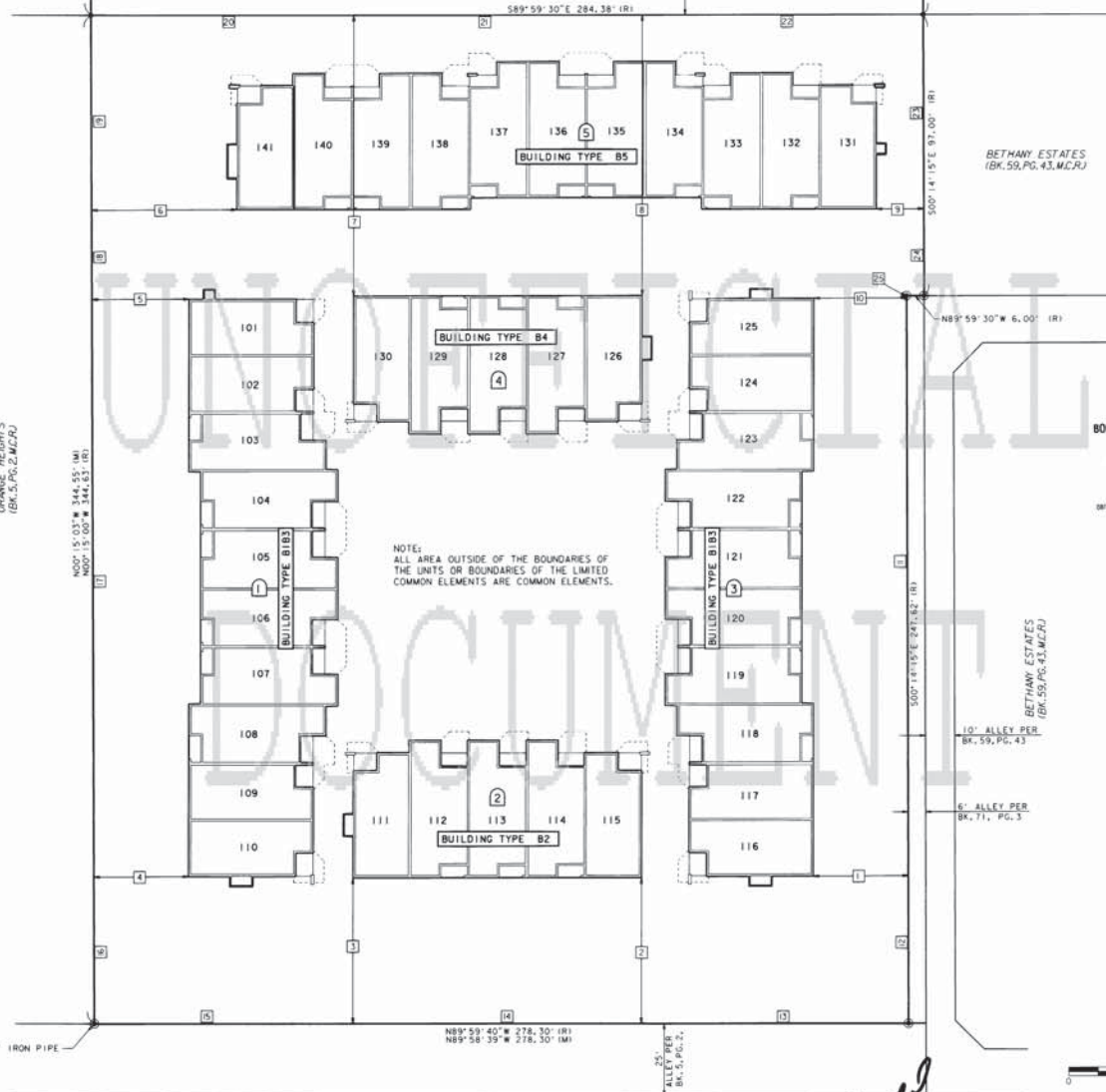
10TH STREET

ROSE LANE

589°59'25"E 381.05' (M)
589°59'30"E 284.39' (M)
589°59'30"E 284.38' (M)
589°59'30"E 284.38' (M)
500°14'15"E 30.00' (R)

N00°15'00"W 30.00' (R)

SET P-K NAIL



BUILDING TIES		
NO.	BEARING	LENGTH
1	N89°45'45"E	32.45'
2	N0°00'20"E	49.38'
3	N0°00'20"E	49.37'
4	N89°45'00"E	32.26'
5	N89°45'00"E	33.12'
6	N89°45'00"E	49.55'
7	N0°00'30"E	96.85'
8	N0°00'30"E	96.84'
9	N89°45'45"E	16.22'
10	N89°45'45"E	31.63'
11	N0°14'15"W	196.93'
12	N0°14'15"W	49.99'
13	N89°59'40"W	91.51'
14	N89°59'40"W	98.60'
15	N89°59'40"W	88.19'
16	N0°15'00"W	49.68'
17	N0°15'00"W	196.94'
18	N0°15'00"W	30.93'
19	N0°15'00"W	67.08'
20	N89°59'30"W	89.71'
21	N89°59'30"W	98.60'
22	N89°59'30"W	96.07'
23	N0°14'15"W	66.76'
24	N0°14'15"W	30.24'
25	N0°14'15"W	0.70'

ORANGE HEIGHTS
(BK. 5, PG. 2, M.C.R.)

N00°15'03"W 344.55' (M)
N00°15'00"W 344.63' (M)

NOTE:
ALL AREA OUTSIDE OF THE BOUNDARIES OF
THE UNITS OR BOUNDARIES OF THE LIMITED
COMMON ELEMENTS ARE COMMON ELEMENTS.

BETHANY ESTATES
(BK. 59, PG. 43, M.C.R.)

BETHANY ESTATES
(BK. 59, PG. 43, M.C.R.)

BOOK 857 PAGE 31
OFFICIAL RECORDS OF
MARICOPA COUNTY RECORDER
HELEN PURCELL
2006-1069823
08/10/2006 02:58 PM

LEGEND

- INDICATES ROADWAY CENTERLINE
- INDICATES BOUNDARY / PROPERTY LINE
- ① INDICATES BUILDING NUMBER
- 101 INDICATES UNIT NUMBER
- ⊙ INDICATES SECTION OR 1/4 SECTION CORNER
- ⊙ INDICATES SUBDIVISION CORNER, SET 1/2" CAPPED REBAR R.L.S. NO. 26409, UNLESS OTHERWISE NOTED
- INDICATES PROPERTY CORNER, 1/2" REBAR TO BE SET, R.L.S. NO. 26409, UNLESS OTHERWISE NOTED
- R/W INDICATES RIGHT OF WAY
- C.O.P. INDICATES CITY OF PHOENIX
- B.O.B. INDICATES BASIS OF BEARING
- F.D. INDICATES FOUND
- B.C.F. INDICATES BRASS CAP FLUSH
- B.C.H.H. INDICATES BRASS CAP IN HANDHOLE
- (R) INDICATES RECORD
- (M) INDICATES MEASURED
- (CM) INDICATES CALCULATED FROM MEASURED



CONDOMINIUM PLAT OF
ANDARE

Handwritten signature
RICK ENGINEERING COMPANY
STEVEN C. RICK
REGISTERED PROFESSIONAL ENGINEER
NO. 10000

SECOND FLOOR LEVEL
SITE PLAN

SHEET 4 OF 10

RICK ENGINEERING COMPANY
6150 NORTH 16TH STREET
PHOENIX, AZ 85016
602.987.3350
FAX:602.283.2396
rickengineering.com

DATE: 08-AUG-2006 PROJECT NO. 34038
DRAWN BY: FW, M.M.

PRELIMINARY-NOT FOR CONSTRUCTION OR RECORDING

0:\341.3\3413cp04.dgn
08-AUG-2006