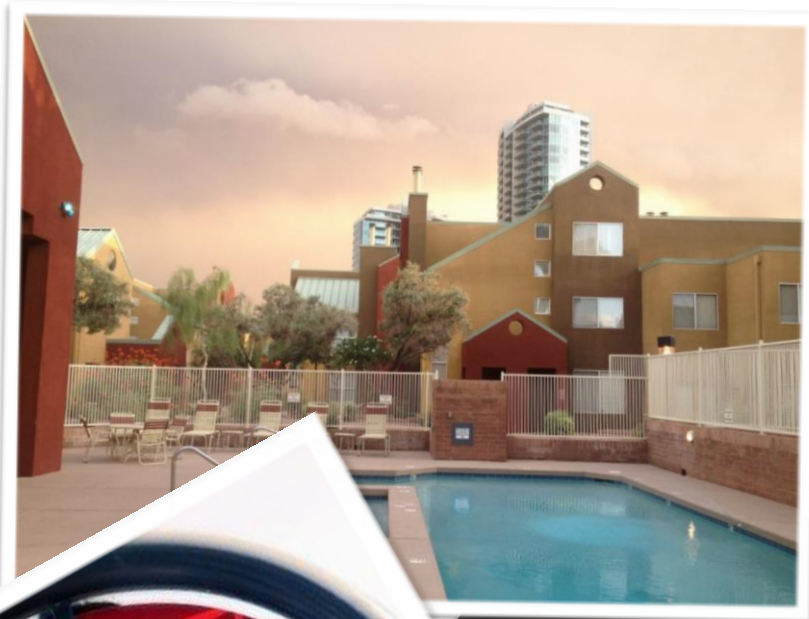




Hayden Square Condominiums

Parking Rules & Regulations

Revised June 2014





Hayden Square Condominiums

Parking Permit Definitions, Rules, Fees & Procedures

Definitions

- **Resident Parking Permit** – Hang Tag (to be displayed on resident vehicle rear-view-mirror). Example Enclosed.
- **Parking Permit Validation Sticker** – Sticker to be applied to the Front of the Parking Permit verifying current valid status as per the expiration date. Renewed annually on or before August 1st of each year. ONLY made available with a completed registration form filed with the Hayden Square Association property management company.
- **Permit Agreement** – The required legal document, which accompanies all Resident Parking Permits.
- **Hayden Square Garage Validation Sticker** – Book of (20), Issued through Vision Community Management (WeAreVision.com), to Hayden Square Residents upon request. Used by both Hayden Square Residents and Guests parking in the public side of the garage between the hours of 5PM and 8AM M-F and All Day Sat-Sun, Excluding Special Events. Sticker to be given to parking attendant with garage ticket upon departure from the garage. See Example Attached.
- **Gate Pass** – Access Card (Proximity Card) used to scan for access to resident authorized areas of Hayden Square Condominiums.
- **Kiosk (Free Parking Code)** – (1) code valid for (5) times per month per individual condominium unit. Each code issued for Free parking is exclusive to the individual condominium unit. Enter code in any West lot Kiosk to receive Free parking in parking area “C” Condo Reserved and Guest Parking (west strip see attached map). The code will not work if the monthly allocation has been exhausted. Codes are created by ParkIt and made available to Residents through Vision Community Management (WeAreVision.com).
- **Resident** – Condominium occupant of record. As verified by ownership or current lease.
- **HSA** - the Hayden Square Association aka the Hayden Square Home Owners or Condominium Association.
- **HSPA** – Hayden Square Parking Association. A group of (7) property owners comprising the collective ownership of the Hayden Square West Lots and the Hayden Square Garage.
- **ParkIt** – Managing authority for the Hayden Square Parking Association.

Resident Parking Rules

- **Hayden Square Resident Vehicle Registration is required for ALL Resident Vehicles.** To be completed on or before August 1st of each year.
- Upon completion of the HSA **Vehicle Registration Form**: a corresponding, numbered dated **Parking Permit Validation Sticker** will be issued to residents who already have an existing



Hayden Square Condominiums

Hayden Square **Parking Permit**. Those requiring a new **Parking Permit** may purchase one at this time.

- Issued **Parking Permit Validation Stickers** are valid for 1 year beginning August 1st of each year.
- Charges for **Parking Permits** are for the permits themselves. They are not valid unless displayed with the appropriate **Parking Permit Validation Sticker**.
- **Resident Parking Permits** may not be registered to a nonresident or nonresident owned vehicle
- **Resident Parking Permits** may only be used with the registered vehicle of record
- At least one **Resident Parking Permit** must be issued per condominium to receive a vehicle Gate Pass to the Residential side of the parking garage.
- The **Resident Parking Permit** will be treated similar to a License Plate. It will remain current until Hayden Square Association changes its design, conditions change or as new technologies may dictate. Resident Parking Permits are only valid with the appropriate **Parking Permit Validation Sticker** with expiration date. Therefore, a current **Resident Parking Permit** may not necessarily be valid. See Example attached.
- Each **Resident Parking Permit** issued, along with the corresponding **Parking Permit Validation Sticker**, will be numbered allowing the HSA, HSPA and ParkIt, easy identification of the vehicle registered to the **Resident Parking Permit**.
- All **Resident Parking Permits** will be displayed in clear view for parking enforcement, hanging from the vehicle rear view mirror. (This applies whether vehicles are parked in a surface lot or within the residential or public sides of the garage).

Resident Parking Permit registration and distribution will be administrated by the Hayden Square Association property manager, Vision Community Management, (not Parkit or your Association Board of Directors). Go to the Hayden Square Page at WeAreVision.com for the form.

Resident Parking Permit Fees

- All **Resident Parking Permits** (Hang tags) - \$50.00 each
- 3 or more **Resident Parking Permits** per Condominium, are available first come first serve only (subject to availability)
- Lost or Stolen **Resident Parking Permit** Replacement \$50.00. The original will be invalidated by the HSA and be reported as lost or stolen.
- Broken **Resident Parking Permits** – \$10.00 with exchange of broken permit
- Any Vehicle Registration changes to an issued **Resident Parking Permit (Required)** are No Charge including annual registration
- A \$25 monthly fee will be charged to the condominium owner's account for each issued and valid Parking Permit beyond the 1st permit registered to an individual condominium unit.
- Additional Assigned Residential Garage Parking may be made available. These spaces will be assigned based on an ANNUAL Lottery. The total costs of the Assigned Residential Garage Parking space is \$80 per month: (\$25 for the Parking Permit, \$55 for the assigned space).



Hayden Square Condominium

Resident must commit to a (1) year term with no guarantee to renew either by the HSA or the resident. Term shall run August 1st through July 31st. (Subject to availability) Terms of less than a year will all expire July 31st following the date of the agreement and are also subject to availability.

Violations

- Parking Rule enforcement will be a collaborative effort of Parkit, Hayden Square Parking Association and Hayden Square Home Owners Association. Enforcement will include but is not limited to: City Parking Citations, Towing, and HSA issued Violations.
- Hayden Square Association reserves the right to invalidate any valid **Resident Parking Permit** if abuse, nonpayment of monthly charges or violation of parking rules is discovered.
- Vehicles displaying lost, stolen or invalidated **Resident Parking Permits** will be towed and reported to the Tempe Police.
- Vehicles Towed will be at OWNERS EXPENSE.

Resident “Parking Locations” (Where you may park and when)

Area A – Public Parking Garage

HSA Resident

- FREE 1 hour Parking, Pay by the Hour, Excluding Special Events.
- FREE Parking for all valid residential permit holders 5:00PM - 8:00AM (M-F) & All Day (Sat & Sun)(Excluding Special Events) with the use of a **Hayden Square Garage Validation Sticker**
- Residents exiting after 8:00AM (M-F) will be charged for any additional hours.

HSA Guest

- FREE Parking for Hayden Square Guest 5:00PM - 8:00AM (M-F) & All Day (Sat & Sun) (Excluding Special Events) with the use of a **Hayden Square Garage Validation Sticker**

Area B – Reserved Condo Resident Garage

HSA Residents ONLY

- **Gate Pass** access ONLY
- FREE parking in Hayden Square Condominium assigned space
- Each Hayden Square Condominium has been assigned 1 reserved garage parking spot
- Do not park in space not assigned to you.



Hayden Square Condominiums

Area C - Reserved Surface Lot HOA Parking (AKA WEST STRIP)

HSA Resident

- FREE Parking for all valid **Resident Parking Permit** holders, for up to 24 hours

HSA Guest

- **Kiosk (Free Parking Code)**

Areas D & E Metered Surface Lot (AKA WEST LOT)

HSA Resident

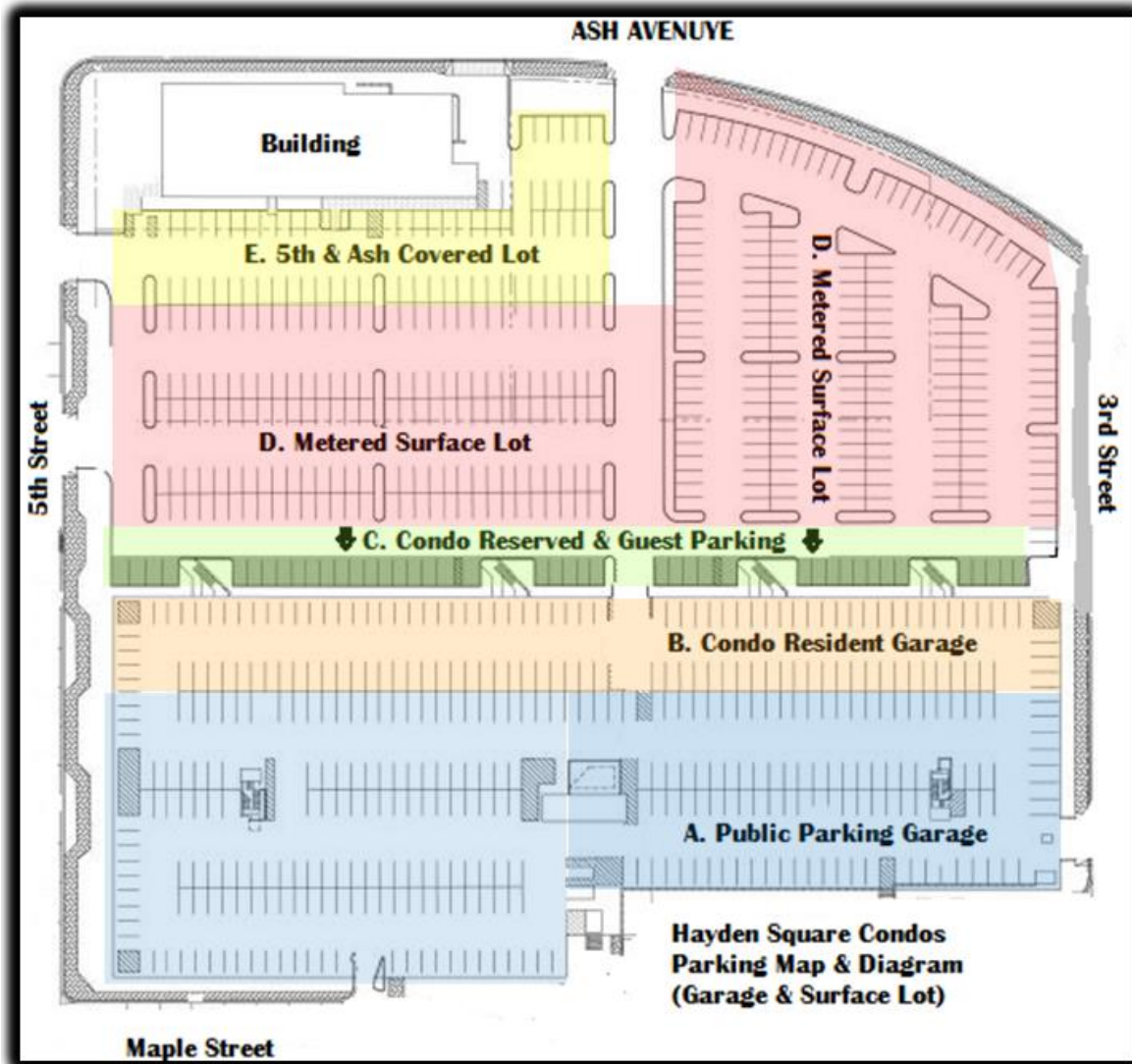
- FREE Parking for ALL vehicles properly displaying a valid **Resident Parking Permit**. Although these spaces are metered, your vehicle is permitted to park in any available space (except for those marked as Reserved). NO KIOSK visits or CODES are required.

HSA Guest

- None



Hayden Square Condominiums



* PARKING LOT LETTERS AND DESCRIPTIONS ARE FOR EXPLANATION AND ILLUSTRATION ONLY.



Hayden Square Condominiums

Resident Parking Permit Example(s)

Front

Back



Hayden Square Garage Validation Sticker

